



Christy Floodlighting Ltd
Dukes park Industrial Estate
Chelmsford
Essex CM2 6UW
01245-451212
sales@christyuk.com

LED FLOODLIGHTING

CHRISTY LIGHTING MASTS



Christy Floodlighting Ltd
Dukes park Industrial Estate
Chelmsford
Essex CM2 6UW
01245-451212
sales@christyuk.com

Newhall School 350 lux Hockey Pitch

- Latest generation LED floodlighting scheme installed on existing hockey pitch
- 350 lux from just 40A per phase
- Reduced spill lighting
- 30KVA compared to 65KVA for metal halide
- Costs savings of up to £106,000 over the lifetime of the installation
- CO₂ Savings of 221,600 Kg



Christy Floodlighting Ltd
Dukes park Industrial Estate
Chelmsford
Essex CM2 6UW
01245-451212
sales@christyuk.com

James Allen Girls School Sports Centre 350 Lux Hockey Pitch & 2 No. Tennis Courts

- Upgrade of existing metal halide floodlights on hockey pitch and 2 tennis courts to latest generation LED floodlights
- Improved lighting
- 10 year manufactures guarantee on floodlights and drivers
- Up to £125,000 cost savings in running costs and lamp replacements over lifetime of installation
- CO₂ savings of over 283,200 Kg

Christy Floodlighting Ltd
Dukes park Industrial Estate
Chelmsford
Essex CM2 6UW
01245-451212
sales@christyuk.com



St Teresa's School - Effingham

350 Lux Hockey Pitch

- New floodlighting system to existing hockey pitch
- Lit to 350 lux
- Requires just 38A per phase
- Tight spill lighting control
- Costs savings of up to £107,000 over lifetime of installation after additional cost of LED compared to metal halide
- CO₂ savings of up to 218,800Kg compared to metal halide

Christy Floodlighting Ltd
Dukes park Industrial Estate
Chelmsford
Essex CM2 6UW
01245-451212
sales@christyuk.com



Wymondham Rugby Club

200 Lux and 100 Lux Rugby Pitches

- New installation of latest generation LED floodlights to a 200 lux grass rugby pitch and a 100 lux grass training rugby pitch
- Improved lighting
- 10 year manufactures guarantee on floodlights and drivers
- Up to £86,600 cost savings in running costs and lamp replacements
- Tight spill control
- CO₂ savings of up to 80,700 Kg

Christy Floodlighting Ltd
Dukes park Industrial Estate
Chelmsford
Essex CM2 6UW
01245-451212
sales@christyuk.com



Ketts Park 200 Lux Football Pitch

- New football pitch
- Lit to 200 lux with latest generation floodlights
- Requires just 38A per phase
- Tight spill lighting control
- Costs savings of up to £62,000 over lifetime of installation compared to metal halide
- CO₂ savings of up to 157,100Kg compared to metal halide

Christy Floodlighting Ltd
Dukes park Industrial Estate
Chelmsford
Essex CM2 6UW
01245-451212
sales@christyuk.com

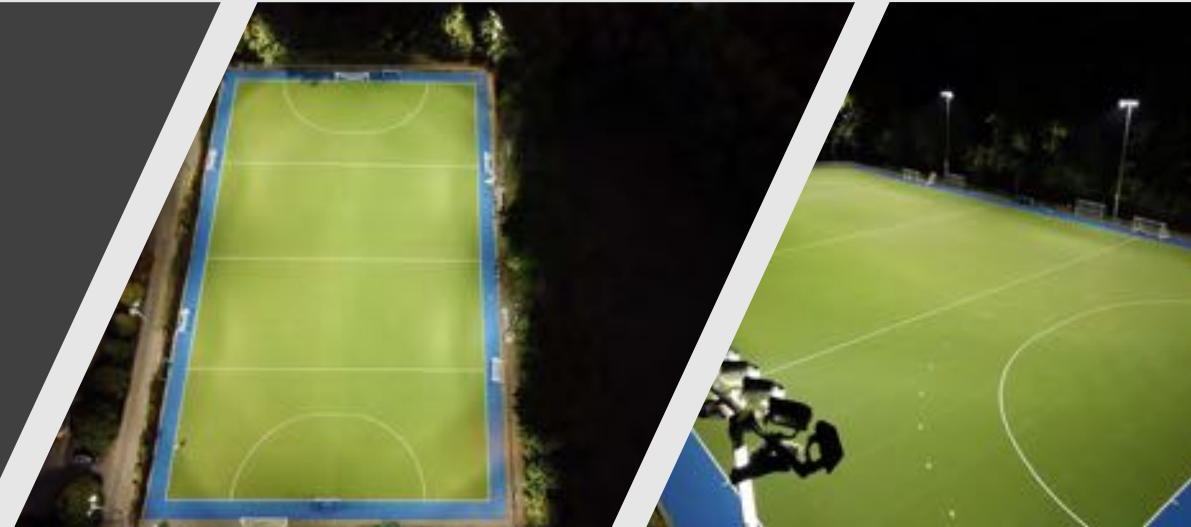


Oxford University - Iffley Road Sports Ground

350 Lux Hockey Pitch

- Replacement of existing metal halide floodlights to a 350 lux hockey pitch
- Improved lighting
- 10 year manufactures guarantee on floodlights and drivers
- Significant cost savings in running costs and lamp replacements
- Tight spill control
- Cost savings of up to £126,000
- CO₂ Savings of up to 294,800 Kg

Christy Floodlighting Ltd
Dukes park Industrial Estate
Chelmsford
Essex CM2 6UW
01245-451212
sales@christyuk.com



Birmingham University - Sports Ground
2 no. 500 Lux Hockey Pitches
10 no. Tennis Courts & 1 no. 200 lux Rugby Pitch

- Install LED floodlights to newly built pitches
- 10 year manufactures guarantee on floodlights and drivers
- Significant cost savings in running costs and lamp replacements
- Tight spill control
- Cost savings of up to £506,720
- CO₂ Savings of up to 872,000 Kg

Christy Floodlighting Ltd
Dukes park Industrial Estate
Chelmsford
Essex CM2 6UW
01245-451212
sales@christyuk.com



Christy Floodlighting Ltd
Dukes park Industrial Estate
Chelmsford
Essex CM2 6UW
01245-451212
sales@christyuk.com

350 LUX HOCKEY PITCH

- Just 100A per phase compared to 150A per phase for metal halide
- 100KVA Compared to 150KVA for metal halide
- Cost savings of up to £100,000 over the lifetime of the installation
- CO₂ Savings of 100,000Kg

All columns designed
and manufactured in the
UK by Christy Lighting
Masts



MEETS ENVIRONMENTAL ZONE E2

Christy Floodlighting Ltd
Dukes park Industrial Estate
Chelmsford
Essex CM2 6UW
01245-451212
sales@christyuk.com



CHRISTY LIGHTING MASTS LTD



James Allen Girls School

Tennis Courts

Christy Floodlighting Ltd
Dukes park Industrial Estate
Chelmsford
Essex CM2 6UW
01245-451212
sales@christyuk.com

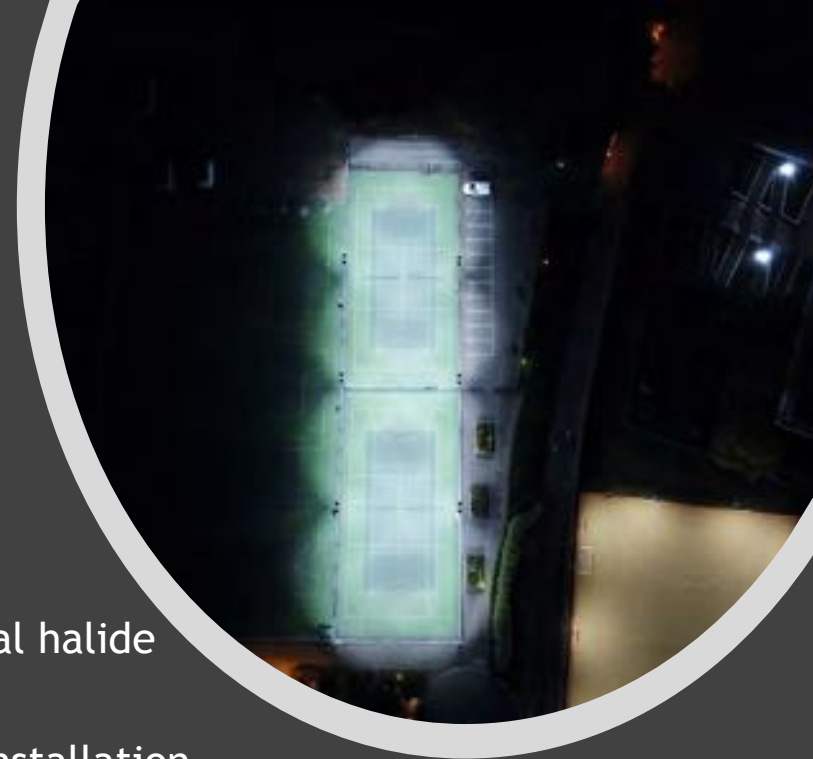
CHRISTY LIGHTING MASTS LTD

GigaTera[®]
beyond light

400 LUX TENNIS COURTS

- Just 11A per phase compared to 23A per phase for metal halide
- 5KVA compared to 10.3KVA for metal halide
- Cost savings of up to £45,500 over the lifetime of the installation
- CO₂ Savings of 67,200KG
- 10 Year manufacturers guarantee on floodlights and drivers

Christy Floodlighting Ltd
Dukes park Industrial Estate
Chelmsford
Essex CM2 6UW
01245-451212
sales@christyuk.com



GigaTera Latest Generation 3 LED Floodlights As Used In 2018 Winter Olympics



CHRISTY LIGHTING MASTS LTD

GigaTera[®]
beyond light

CHRISTY LED UPGRADE

Before Upgrade - 2kW Metal Halide - 200lux



Post Upgrade - GigaTera MAF800 - 200lux

GigaTera LED floodlights provide significant improvement to visual impact

**CHRISTY FLOODLIGHTING UK Agent for GIGATERA
LED.**

LED Sports Lighting Solution

Football & Sports Field

AIMED AT PERFECTION IN LED SPORTS LIGHTING !!

- *MINIMUM LIGHT POLLUTION & PSYCHOLOGICAL GLARE IMPACT TO NEIGHBORING AREA*
- *REDUCE POLE HEIGHT, LUMINAIRE QUANTITY & PROJECT COST THANKS TO ADVANCED OPTIC DESIGN*
- *FLICKER-FREE, HIGH UNIFORMITY FOR VIDEO RECORDING, BROADCASTING & PLAYERS*
- *COMPACT SIZE, LESS WEIGHT & WIND LOAD ENABLING RESUE OF EXISTING POLES & STRUCTURE*
- *SMART CONTROL & DYNAMIC LIGHTING EVENT*
- *SUPERIOR HEAT MANAGEMENT & LUMINAIRE LIFE TIME*
- *MAXIMUM ENERGY SAVING & FASTER ROI*



GigaTera[®]
beyond light

CHRISTY FLOODLIGHTING UK Agent for GIGATERA LED.

GigaTera Lighting

GigaTera Lighting's holding company, KMW Inc., was founded on January 10, 1991 and a publicly traded company (KOSDAQ in Korean stock market) based in Hwasung City, South Korea.

KMW is the global market leader in the 5G wireless infrastructure market and LED lighting segment.

- Over 2000 employees worldwide & annual turnover around USD 700 millions in FY2019 consolidated.
- Research and development center in South Korea, California in USA and Shaanxi Province in China to support worldwide customers
- Manufacturing presence in South Korea, China and Vietnam.
- Over 10 customers are listed in Fortune 500 companies
- LED lighting business started from 2010 with its own brand name "GigaTera Lighting".

GigaTera Lighting's core LED lighting solutions are flood lighting in sports and industrial application as well as street lighting and high bay. GigaTera LED products are field proven quality from many global project references and also provide unique & smart light control solutions combined with advanced network system technology.

Customers



CHRISTY FLOODLIGHTING UK Agent for GIGATERA LED.

WHO WE ARE

The world leader in LED sports lighting industry

GigaTera Lighting is a world-class Total Lighting Solution provider with high power LED lighting (sports, harbor, and industrial). Our proprietary "Narrow Multi-Beam Forming" application is leading the market with cutting-edge manufacturing technology with the highest efficiency, reliability and most competitive price.

WHAT WE OFFER

Sports Lighting / Global lead of IoT Total Solution

GigaTera Lighting has been providing customers with non-flicker technology, superior color quality guarantee, and various event / entertainment solutions for the UHD broadcasting, which is based on communication technology for 25 years.

We are also taking the lead in building a smart safe city that can secure various kinds of disaster, crime safety and golden time by integrating IoT / ICT technology of smart lighting with image detection and sound source detection.

FACILITIES

Manufacturing and R&D facilities in Korea and World wide.

GigaTera Lighting produces high-quality LED products with state-of-the-art production, equipment and innovative engineering.

WHAT WE OWN

Build vertical integration system from R&D to mass production

GigaTera Lighting has built up a vertical sequencing system from R&D to mass production, with over 260 patents and registered top engineers (CRAZY LAB).

In addition, GigaTera Lighting has state-of-the-art reliability equipment, large chamber facilities, innovative manufacturing lines and technologies. We are also building global networks such as USA, Europe, Japan, India, Middle East and Southeast Asia.



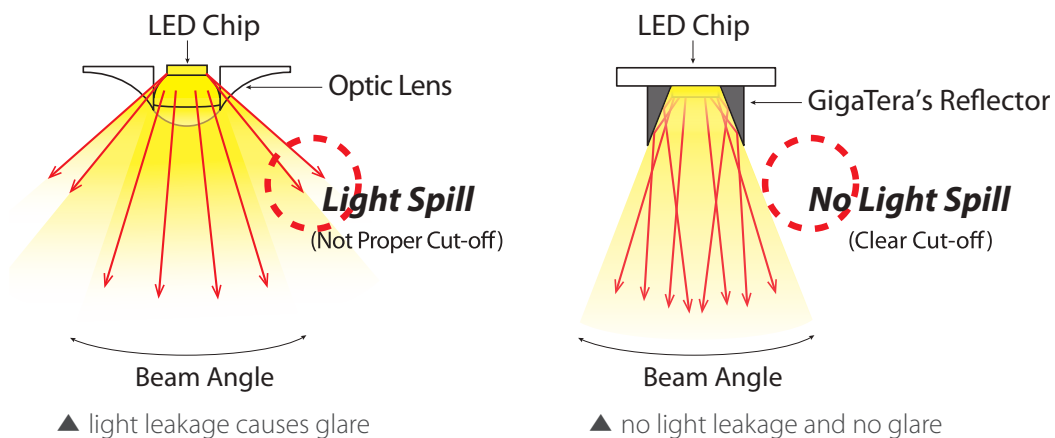
Mirror Type Goniophotometer



CHRISTY FLOODLIGHTING UK Agent for GIGATERA LED.

What differentiated GigaTera Lighting?

- **MINIMUM LIGHT POLLUTION & GLARE TO PLAYERS & NEIGHBORING AREA**
- **NO NEED (OR MINIMUM USE) OF BAFFLE & VISOR ONTO POLE OR FIXTURE**
- **NO IMPACT TO POLE STRUCTURE & WIND LOAD**
- **COST-EFFICIENT, FAST, EASY REPLACEMENT & CONSTRUCTION**



✓ *Advanced Full Cut-Off Technology*

GigaTera Lighting's optic design has a structure that features full cut-off beam applying the unique reflector technology. This solution minimizes the light spill, while maximizing the useful lumens to the field, which ensures that the athletes can focus on the game and the spectators can enjoy a comfortable viewing experience. Also, it helps to reduce pole height and minimize total project costs including pole and installation, while complying with the strengthened local regulation in light pollution or psychological glare impact in neighboring area without use of baffle or visor onto the pole or luminaire.

Thus, GigaTera LED flood lighting solution is the best choice to not only minimize the cost, but also minimize the concern about the pole structure and wind load in both replacement and new construction of the sports field lighting.



CHRISTY FLOODLIGHTING UK Agent for GIGATERA LED.

✓ Why is Glare an important factor?

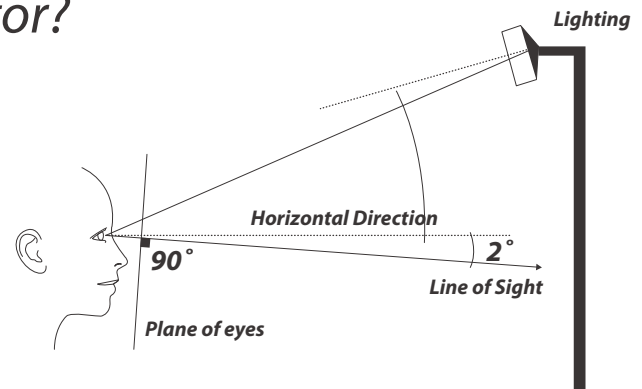
Glare Rating Requirement <math>< 50^\circ</math> (In Simulation)

Traditional requirement is based on Viewer's Aspect up to 30° from horizontal line of sight ($\Delta \leq 30^\circ$)

Glare causes a distraction in the game!

Players look beyond 30° (In Reality)

In a sports game, players always look upwards beyond the horizontal line of sight ($\Delta \geq 30^\circ$)



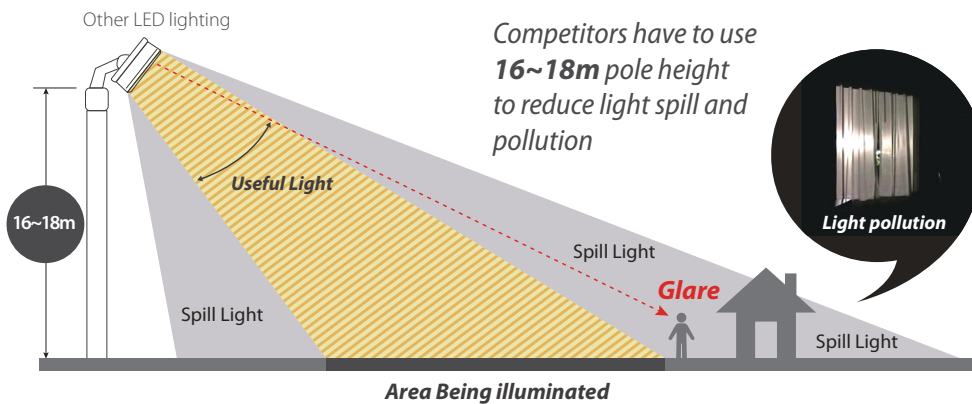
✓ Why GigaTera LED solution can Save total project Cost ?

Other LED lightings using normal lens optic must use 16~18m pole height to avoid glare and light pollution.

However, GigaTera's advanced optic solution enables to use only 12~14m pole height, which can realize significant savings in total project costs.

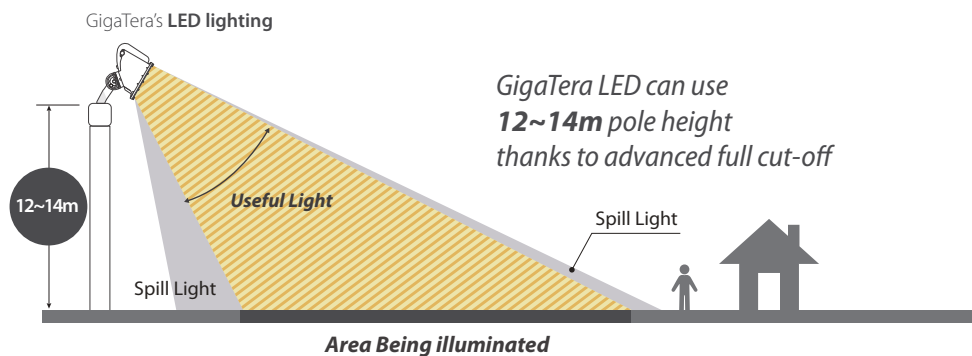
Other LED Lighting

Pole height
16~18m



GigaTera LED Lighting

Pole height
12~14m



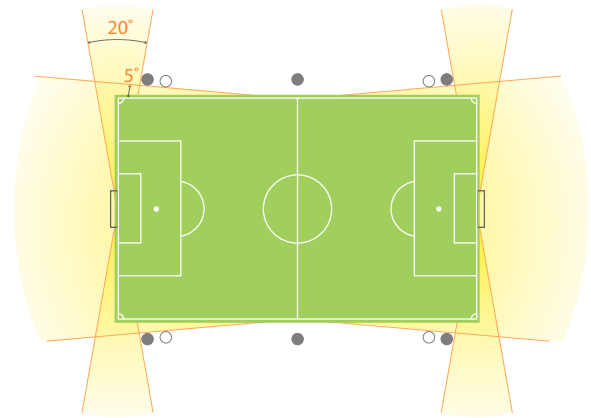
CHRISTY FLOODLIGHTING UK Agent for GIGATERA LED.

✓ Football field lighting design

The design should eliminate momentarily strong, glaring light as much as possible and increase the overall uniformity.

Shadows and inadequate vertical plane luminance impede athletes and spectators and these issues should be solved through the design.

The design must prevent light pollution by taking account of the surrounding environment.



Recommendation of Minimum Lighting Levels

| Sport | Illuminance Level (Em. Horizontal) Lux * (Non CTV) | | | | | |
|----------|--|--------------|-----------|--------------|----------|--------------|
| | Class II | | Class III | | | |
| | Em (Lux) | Uo (Min/ave) | Em (Lux) | Uo (Min/ave) | Em (Lux) | Uo (Min/ave) |
| Football | 200 | 0.6 | 100 | 0.5 | 75 | 0.5 |

※ EN 12193

- Class I : Top Level Competition
- Class II : Intermediate Level Competition
- Class III: Lower Level Competition & Supervised Training

* Em is the Maintained Illuminance Level (specification level) and is the design illuminance level, below which the lighting should not be allowed to fall during the period to planned maintenance.

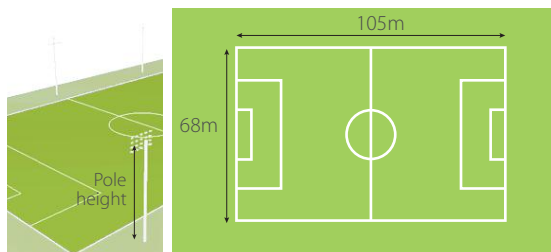
✓ Required Quantities by Products

| Lux | | 75 lux | | | 100 lux | | | 150 lux | | | 200 lux | | |
|----------------|--------|--------|-----|--------|---------|-----|--------|---------|-----|-----|---------|-----|-----|
| Height of pole | | 12m | 14m | 16m | 12m | 14m | 16m | 12m | 14m | 16m | 12m | 14m | 16m |
| 4 pole | SMA600 | 12 | 12 | 12 | 16 | 16 | | 24 | 24 | | 32 | 32 | |
| | MAH900 | | | | | | 12 | | | 16 | | | 20 |
| 6 pole | MAH600 | | | *12(1) | | | | | | | | | |
| | SMA600 | 12 | 12 | *12(2) | 16 | | | 24 | | | 32 | | |
| | MAH800 | | | | | | *12(1) | | | | | | |
| | MAH900 | | | | | | | | 18 | 18 | | | |
| | MAH1K0 | | | | | 12 | *12(2) | | | | | 18 | 18 |
| 8 pole | SMA600 | 12 | 12 | | 16 | 16 | | 24 | | | 32 | | |
| | MAH800 | | | 8 | | | 12 | | | | | | |
| | MAH900 | | | | | | | | 16 | 16 | | | |
| | MAH1K0 | | | | | | | | | | | 16 | 16 |

* (1), (2) : options

CHRISTY FLOODLIGHTING UK Agent for GIGATERA LED.

✓ Football field LED Design & Product Guide

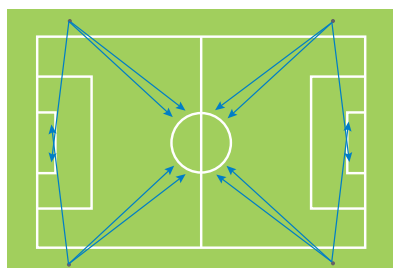


Football field conditions

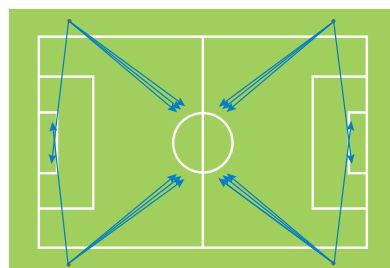
Installation products : SUMA / MAHA-PLUS series
 Football field size : 105m x 68m
 Pole q'ty : 6 pole / 4 pole
 LLF(maintenance factor) : 0.8

4 pole

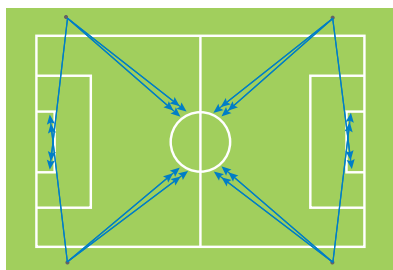
Pole height
12~14m



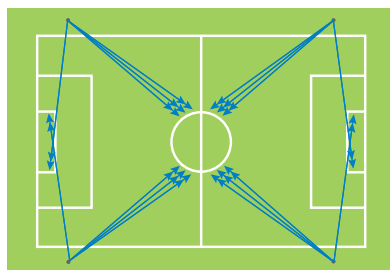
Class III (75 lx)
SUMA 600W
12ea



Class III (100 lx)
SUMA 600W
16ea



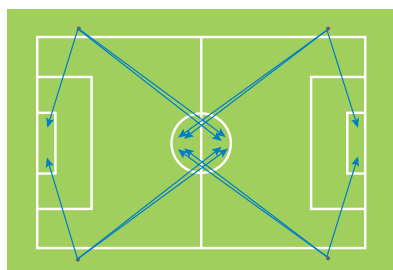
Class II (150 lx)
SUMA 600W
24ea



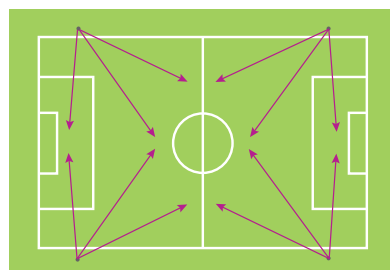
Class II (200 lx)
SUMA 600W
32ea

4 pole

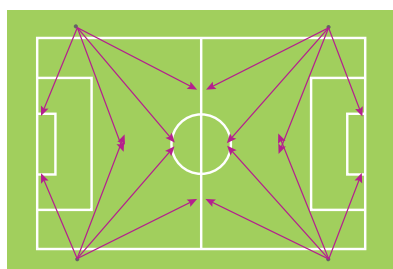
Pole height
16m



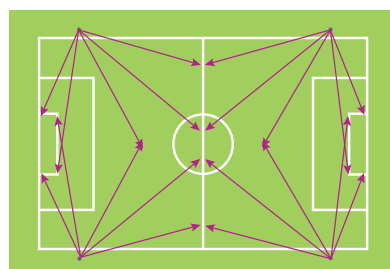
Class III (75 lx)
SUMA 600W
12ea



Class III (100 lx)
MAHA-PLUS 900W
12ea



Class II (150 lx)
MAHA-PLUS 900W
16ea

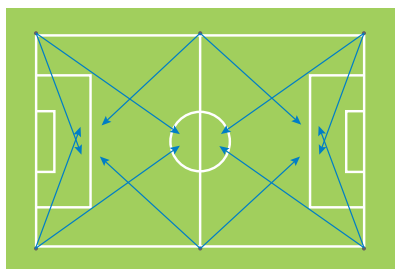


Class II (200 lx)
MAHA-PLUS 900W
20ea

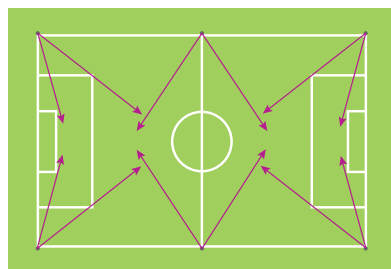
CHRISTY FLOODLIGHTING UK Agent for GIGATERA LED.

6 pole

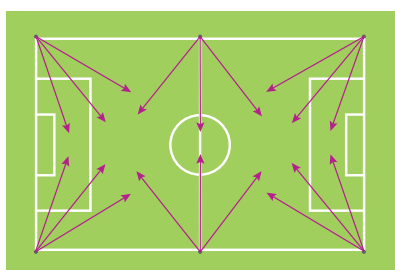
Pole height
16m



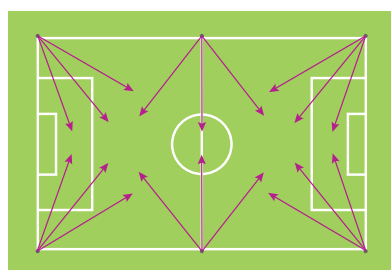
Class III (75 lx)
SUMA 600W
12ea



Class III (100 lx)
MAHA-PLUS 1000W
12ea



Class II (150 lx)
MAHA-PLUS 900W
18ea



Class II (200 lx)
MAHA-PLUS 1000W
18ea

✓ Product Information



Remote & Built-in Driver type

MAHA-PLUS

Outstanding Asymmetric Light Distribution
Excellent luminous efficacy 150 lm/W
Optimized design for flood light
Smart lighting control using wireless or receptacle

| Model | Power | Luminous Efficacy | Luminous Flux | Color Temperature | CRI |
|--------|-------|-------------------|---------------|-------------------|--------------|
| MAH1K0 | 1000W | 135 lm/W | 135,000 lm | 4000K 5000K | 70Ra or 80Ra |
| MAH900 | 900W | | 121,500 lm | | |
| MAH800 | 800W | 120 lm/W | 96,000 lm | | |
| MAH600 | 600W | 150 lm/W | 90,000 lm | | 80Ra |



Remote & Built-in Driver type

SUMA

Light Distribution to Far Area
High luminous efficacy 120 lm/W
Full Cut-off & Minimized Glare
Outstanding Cooling Technology

| Model | Power | Luminous Efficacy | Luminous Flux | Color Temperature | CRI |
|--------|-------|-------------------|---------------|-------------------|------|
| SMA600 | 600W | 120 lm/W | 72,000 lm | 4000K 5000K | 70Ra |
| SMA400 | 400W | | 48,000 lm | | |

CHRISTY FLOODLIGHTING UK Agent for GIGATERA LED.

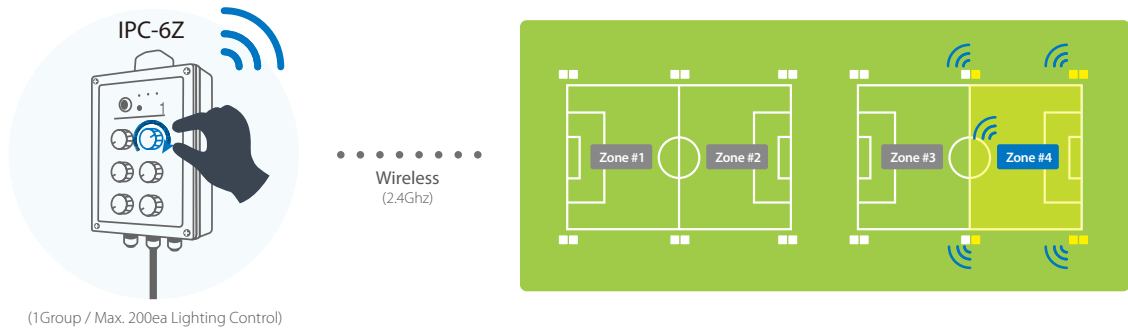


✓ GigaTera Lighting Smart Control for Sports Field

Option 01


*On site control using Intelligent wireless wall switch
Cost-efficient, easy & simple manual control (Scan QR code to see how it works)*

- Additional energy saving by dimming for unoccupied field
- Intelligent Wireless Control unit (IPC Wall Switch) to be installed with AC power nearby sports field (Example : Maintenance Office, Security Post etc)
- Independent light control per each training field (Example : Control Knob No. 1 can control Field No. 1)




* Scan QR code to see how it works


IPC Wall Switch
On site control per designated field & zone configuration



IPC 6 zone
max. 6 sports fields or 6 divided zones



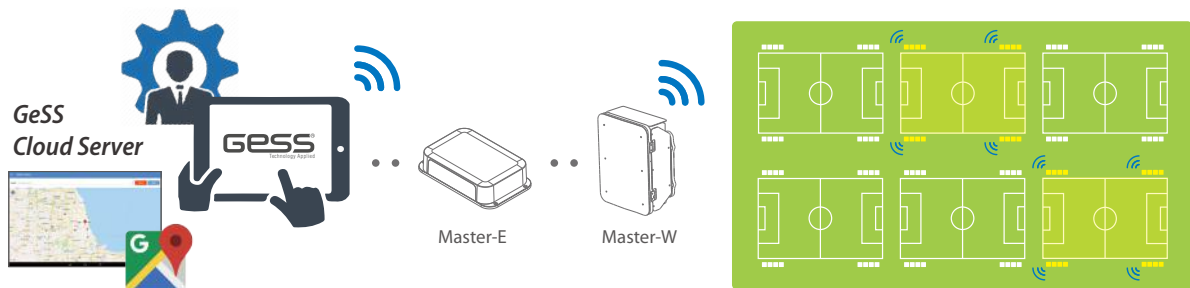
IPC 3 zone
max. 3 sports fields or 3 divided zones



Option 02

*Remote control using Cloud Service & Smart phone
Highly efficient & value-added remote control targeting facility management*

- Control the LED lighting by Mobile Tablet via Cloud Server operated by GigaTera
- Support to Several Control Mode which are User ON/OFF Time, Sunrise/Sunset and Manual Mode.
- Support to Google Map API Control



Remote control through control device installation & graphic user interface design



Master-W
Install outside control office, control max. 200 LED fixtures



Master-E
Link to LAN internet inside office & connect to Master-W with cable

CHRISTY FLOODLIGHTING UK Agent for GIGATERA LED.

Reference



San mames Stadium, Bilbao / Spain



Birmingham University, Rugby & Football field / UK



Oxford University, Rugby & Football field / UK

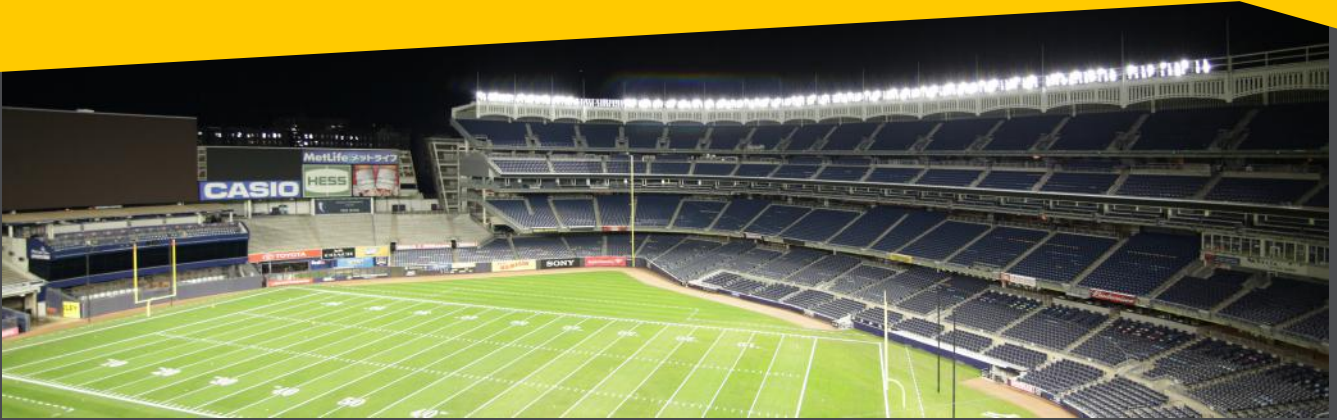


Football Field, Freiburg / Germany

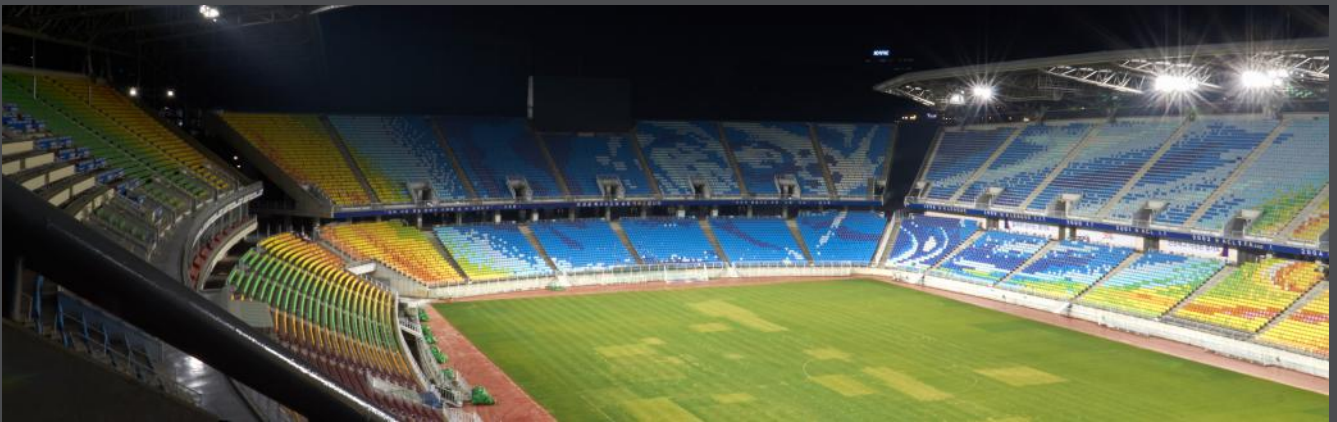


Kyeongju Football Field / Korea

CHRISTY FLOODLIGHTING UK Agent for GIGATERA LED.



NY Yankees Stadium / USA



Suwon World Cup Stadium / Korea



Football Field in Groeninger / Netherlands



Yangpyeong Sports Facility / Korea



Polo & Equestrian Field, Dubai / UAE



Futsal Field / Japan

CHRISTY FLOODLIGHTING UK Agent for GIGATERA LED.

GigaTera®
beyond light

GigaTera Lighting *Head Office, Republic of Korea*

3, Donghtansandan 6-gil, Hwaseong-si,
Gyeonggi-do, Korea 18487
Tel : +82.31.370.8800
Fax : +82.303.0947.3617
E-mail : ledsales@gigateraled.com
www.gigateralighting.com

GigaTera Lighting

1818 E. Orangethorpe Ave. Fullerton,
CA, U.S.A 92831
Tel : +1-714-515-1481
Fax : +1-714-515-1134
E-mail : ledsales@gigateraled.com
us.gigateralighting.com

GigaTera Lighting EU GmbH

Bonner Str. 355 40589 Dusseldorf,
Germany
Tel : +49-(0)211-989-675-0
Fax : +49-(0)211-989-675-21
E-mail : sales@gigatera.de

GigaTera Lighting Turkey

Soganlik Yeni Mah. Balikesir Cad.
Uprise Elite C1AB Blok Kat:28
No:242 34880 Kartal, Istanbul, Turkey
Tel : +90-216-999-3578
E-mail : info@gigateraled.com.tr
http://www.gigateraled.com.tr

GigaTera Lighting Middle East

Al Saman Tower, Block B 12th Floor,
Hamdan Street, Abu Dhabi,
UAE (PO Box 5100287)
Tel : +971-2-6210002
Fax : +971-2-6210003
E-mail : me@gigateraled.com

GigaTera Lighting Japan Inc.

4F, K&G Bldg., 1-3, Yamabukicho,
Naka-ku Yokohama-shi, Kanagawa,
231-0038, Japan
Tel : +81-45-251-8951
Fax : +81-45-251-8952
E-mail : info@kmwinc.co.jp
www.gigateralighting.com/jp

GigaTera Lighting East Asia

D3-29, Jalan Dutamas 3, Taman Dutamas,
Cheras, 43200 Balakong, Selangor, Malaysia
Tel : +60-03-9081-8355
E-mail : gigateraledmalaysia@gmail.com

GigaTera Lighting India Pvt. Ltd.

P128, Sector 5, IMT, Manesar,
Manesar-122052,
Haryana, INDIA
Tel : +91-124-437-2035
E-mail : sales@gigateraled.in

Christy Floodlighting Ltd
Dukes park Industrial Estate
Chelmsford
Essex CM2 6UW
01245-451212
sales@christyuk.com

Due to product revision, Gigatera Lightng reserves the right to make changes at any time, without prior notice.

© 2018 GigaTera Lighting All Rights Resevered. Not to be reproduced wholly or in part without written permission of GigaTera Lighting Korea.

Gigatera Latest Generation LED Floodlights

GigaTera

LED Flood Lighting - Area Flood Lighting

SMA SUMA

CB UL CE

Excellent light distribution even at long distance

- High luminous efficacy 105 lm/W
- Tilting structure for optimized aiming (Upward : 90°, Downward : 90°)
- Wired/Wireless dimming controls
- Outstanding cooling technology and durability

Application

Harbour, Airport aprons, Airplane Hangars, Container terminals, Sporting facilities, Parking lots

Specifications

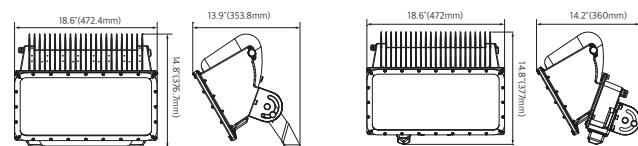
* Tolerance : ± 5%

| Driver Type | Model | Power | *Luminous Efficacy | *Luminous Flux | Color Temperature | CRI | Weight | Input Voltage | Operation Temperature |
|-------------|--------|-------|--------------------|----------------|-----------------------------------|-------|-------------------|--------------------------|-----------------------|
| Built-in | SMA400 | 400W | 105 lm/W | 42,000 lm | 5000K (3000K, 4000K available) | 70 Ra | 12.5 kg / 27.6 lb | AC200-240V AC200-277V | -30°C-55°C |
| | | | | | | | | DC100V (RED) | |
| Remote | SMA400 | | | | | | 10.3 kg / 22.7 lb | | -22°F-131°F |

| | | | |
|-------------------|---------------------------|--|--|
| Body Cover Finish | Cast Aluminum | Mounting Option Light Distribution Control System | Swivel Bracket Asymmetric Wide Remote Type : Wired (RS-485) / Built-in Type : Wireless * more details of Remote Driver(REL) |
| | Tempered Glass 4T (Clear) | | |
| | Powder Coating | | |

Dimensions

- SMA400 (Remote Type)



- SMA400 (Built in Type)



The above specifications were updated in July 2019 / The content may be subject to change without notice.



GigaTera

LED Flood Lighting - Area Flood Lighting

MAH MAHA

CB CE UL FC DLC

Unrivaled efficacy 150 lm/W

- Asymmetric beam distribution enabling cost efficient 1 on 1 replacement for HID flood light
- Outstanding cooling technology and durability
- Excellent light distribution and minimized glare
- Smart lighting control using wireless or Receptacle



IP 66

MAH500

Application

Sporting facilities, Airplane Hangars, Airport Aprons, Parking Lots, Harbour, Yard

Specifications

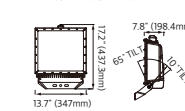
* Tolerance : ± 5%

| Driver Type | Model | Power | *Luminous Efficacy | *Luminous Flux | Color Temperature | CRI | Weight | Input Voltage | Operation Temperature |
|-------------|--------|-------|--------------------|----------------|--|-------|-------------------|--|---------------------------|
| Built-in | MAH600 | 600W | 150 lm/W | 90,000 lm | 5000K (3000K, 4000K, 5700K available) | 80 Ra | 20.0 kg / 44.0 lb | AC220-240V | -22°F-131°F -30°C-55°C |
| | | | | | | | | AC200-277V | |
| | | | | | | | | AC347-480V | |
| | MAH500 | 500W | 150 lm/W | 75,000 lm | | | 15.0 kg / 33.1 lb | AC220-240V | -22°F-122°F -30°C-50°C |
| | | | | | | | | AC200-277V | |
| | MAH400 | 400W | 150 lm/W | 60,000 lm | | | 15.0 kg / 33.1 lb | AC100-240V AC120-277V AC347-480V | -22°F-131°F -30°C-55°C |
| | MAH250 | 250W | 150 lm/W | 37,500 lm | | | 7.5 kg / 16.6 lb | AC220-240V AC200-277V AC347-480V | -22°F-131°F -30°C-55°C |
| | MAH200 | 200W | 150 lm/W | 30,000 lm | | | 7.5 kg / 16.6 lb | AC100-240V AC120-277V AC347-480V | -22°F-131°F -30°C-55°C |
| | MAH150 | 150W | 145 lm/W | 21,750 lm | | | 7.5 kg / 16.6 lb | AC100-240V AC100-277V | -30°C-60°C -22°F-140°F |
| Remote | MAH500 | 500W | 150 lm/W | 75,000 lm | | | 11.3 kg / 24.9 lb | DC100V (RED) | -22°F-131°F -30°C-55°C |
| | | | | | | | | | |

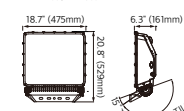
| | | | |
|-------------------|---------------------------|--|--|
| Body Cover Finish | Cast Aluminum | Mounting Option Light Distribution Control System | Swivel Bracket / Pole Mount Bracket Asymmetric Wide Wireless / NEMA-7 Receptacle / Wired (RS-485, Remote Driver Type Only) * more details of Remote Driver(REL) |
| | Tempered Glass 4T (Clear) | | |
| | Powder Coating | | |

Dimensions

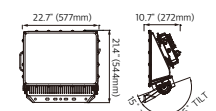
- MA150 / MAH200 / MAH250



- MAH400 / MAH500



- MAH600



The above specifications were updated in July 2018 / The content may be subject to change without notice.